

Noark

Catalog

UL 98 Non-Fusible Disconnect Switch



Excellent Products. Exceptional Value.

na.noark-electric.com

ABOUT US

NOARK Electric is a global manufacturer of low-voltage electrical components for industrial applications. We specialize in motor controls and circuit protection for original equipment manufacturers. Our mission is to provide customers with the highest quality products at an exceptional value and back them with world-class service and support. Every NOARK product is tested and certified to the highest industry standards and covered by our exclusive five-year limited warranty.

Research and Development

The entire portfolio of high-quality NOARK products is designed for manufacturing and assembly (DFMA). Each component is developed in-house by our engineering team to meet the strictest standards and performance requirements. This dedication to excellence has led to the development of patented technology found in many of our products.

World-class Manufacturing

After being thoroughly tested, approved and certified – each NOARK product is sent into production at our state-of-the-art manufacturing facilities. This allows us to maintain strict quality control standards throughout the manufacturing process. In addition, NOARK Electric adheres to a policy of environmental protection and sustainability.

North American Distribution

NOARK's distribution centers are located in Pomona, CA and Kitchener, ON, with the aim of ensuring prompt and reliable deliveries of the entire product range to our customers all over North America. Our supply chain team works closely with our factories and logistics partners to ensure the availability of our products on the North American market and provide logistics services on the level which our customers expect. NOARK Electric is a subsidiary of the largest electrical manufacturing group in Asia with over 50 thousand employees and sales revenue of \$22 billion USD. We have corporate facilities in Los Angeles, Shanghai and Prague to service the requirements of individual markets and countries.

140+

Countries

300+

Overseas Distributors

20

Overseas Subsidiaries

22

Logistics Centers

3

R & D Centers

10,000,000+

Sq.Ft. Manufacturing Space

50,000+

Employees Worldwide





TABLE OF CONTENTS

A. Non-Fusible Rotary Disconnect Switch	
Product Overview	1
Product Selection Guide	2
UL98 Specifications	3
CE Specifications.....	4
De-rating Specifications and Wiring Diagram	5
Dimensions	6
B. Accessories	
Rotary handle, Extended shaft.....	10
Auxiliary Contact.....	12
N pole	13





Non-Fusible Rotary Disconnect Switch

Product Overview

Noark RDS1 series non-Fusible Rotary Disconnect Switch complies with UL98 standard and can be used for isolation in AC 600V power systems. During the maintenance of electrical equipment, the product can isolate the equipment from the power supply, forming a clear disconnect point to ensure the safety of maintenance personnel and equipment.

Design Features

- Electrical lifecycle: 6,000 times; Mechanical lifecycle: 20,000 times;
- Current ratings: 30~100A; maximum voltage rating: 600V;
- DIN rail/board mounting and door mounting options with rotary and selector handles.
- The switch can be equipped with up to 2 pairs of auxiliary contacts on both sides, with buckle design for easy mounting and unmounting.
- Widely used in industry and commerce, including power distribution, construction, petrochemical, etc.

Standards and certifications

- UL 98
- IEC/EN 60947-3
- GB/T 14048.3



RDS	1	B	30	3	S
RDS Series Non-Fusible Disconnect Switch	Frame size	Mounting Type	Current Rating	Number of Poles	Handle
	1: 125A	B: Board / DIN rail mounting D: Door mounting	30: 30A 60: 60A 100: 100A	3: 3-pole 4: 4-pole	S: Equipped with selector handle (Only for door mounting type)





Non-Fusible Rotary Disconnect Switch

Product Selection Guide



Rated current (A)		3-pole		4-pole	
		Product	Part Number	Product	Part Number
Door-mounting switch- Assemble selective handle	30	RDS1D303S	1002979	RDS1D304S	1002991
	60	RDS1D603S	1002980	RDS1D604S	1002992
	100	RDS1D1003S	1002981	RDS1D1004S	1002993
	125	RDS1D1253S	1002982	RDS1D1254S	1002994



Rated current (A)		3-pole		4-pole	
		Product	Part Number	Product	Part Number
Base/DIN rail mounting	30	RDS1B303	1002971	RDS1B304	1002983
	60	RDS1B603	1002972	RDS1B604	1002984
	100	RDS1B1003	1002973	RDS1B1004	1002985
	125	RDS1B1253	1002974	RDS1B1254	1002986



Non-Fusible Rotary Disconnect Switch

UL98 Specifications

			RDS1			
Standard			UL98			
Number of Poles			3, 4			
Voltage Rating (Vac)			600			
Current Rating (A)			30	60	100	
Rated Conditional Short-Circuit Current (kA)	600V		200	200	50	200
Maximum Fuse Size (A)			60	60	150	100
Fuse Type			Class J, Class T			
General purpose amp rating pf = 0.7 ~ 0.8; -40℃~+40℃	Current Rating (A)		30	60	100	
	Max. operating voltage (Vac)		600			
Max. horsepower rating / motor FLA current	Pf = 0.4 ~ 0.5	240V	10HP/28A	20HP/54A	30HP/80A	
		Three Phase	480V	20HP/27A	40HP/52A	50HP/65A
			600V	30HP /32A	40HP/41A	50HP/52A
	Single Phase	120V	2HP/24A	3HP/34A	5HP/56A	
		240V	5HP/28A	7.5HP/40A	15HP/68A	
		480V	--	--	25HP/55A	
		600V	--	--	20HP/35A	
Operations	Electrical (times) pf = 0.7 ~ 0.8		6,000			
	Mechanical (times)		20,000			
Wire Range (M8)	Disconnect switch AWG (mm²)	30A, 60A	14~4 (2.5~25)			
		100A	8~1/0 (10~70)			
	Auxiliary Contacts AWG (mm²)		22 (0.4~0.5)			
Wire Tightening Torque (N.m)	Main circuit		6.2			
	Auxiliary		0.8			
Operating Torque (N.m)			1.5 ~ 2			



Non-Fusible Rotary Disconnect Switch

CE Specifications

			RDS1			
Standards			IEC/EN 60947-3			
Number of Poles			3,4			
Current Rating (A)			30	60	100	125
Rated operational Current (A)	AC-21A AC-22A	415V	40	63	100	125
		500V	40	63	100	125
		690V	40	63	100	125
	AC-23A	415V	40	63	80	90
		440V	40	63	65	78
		500V	40	63	60	70
		690V	40	40	40	50
Rated Insulation Voltage Ui (V)			750			
Dielectric Strength 50Hz/1 min. (kV)			6			
Rated short circuit making capacity Icm (kA)			3.6 (peak value)			
Rated Impulse Withstand Voltage Uimp (kV)			8			
Rated Short-time Withstand Current Icw			2.5kA/1s (r.m.s. value)			
Protection Degree			IP20			
Operating Direction			Front operation			
Wiring Range (M8)	Switch-dis-connector AWG (mm²)	30A, 60A	14~4 (2.5~25)			
		100A, 125A	8~1/0 (10~70)			
	Auxiliary contacts AWG (mm²)		22 (0.4~0.5)			
Wire Tightening Torque (N.m)	Main circuit		6			
	Auxiliary		0.8			
Operations	Mechanical Lifecycle (times)		20,000			
Operating Torque (N.m)			1.5 ~ 2			
Operating Temperature Range			-40℃~+85℃ (Does not derate at 70℃)			
Altitude ft (m)			Does not exceed 6,561 (2,000)			
Atmospheric Conditions			At 68 °F (+20℃), the relative humidity does not exceed 90%			
			At 104 °F (+40℃), the relative humidity does not exceed 50%			



Non-Fusible Rotary Disconnect Switch

De-rating Specifications and Wiring Diagram

Temperature De-rating

When the ambient temperature changes within its operating temperature range, please refer to the table below for the Temperature Compensation Coefficient.

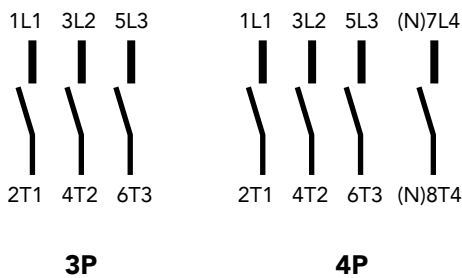
Ambient temperature (°C)	70	75	80	85
Operating current compensation coefficient	1	0.95	0.92	0.88
Operating voltage compensation coefficient	1	1	1	1
Power frequency withstand voltage (kV)	6	6	6	6

Elevation De-rating

Breaker elevation de-rating with dielectric strength above 6,561 ft (2,000 m)

Altitude (m)	6,561 (2,000)	9,842 (3,000)	13,123 (4,000)	16,404 (5,000)
Operating current compensation coefficient	1	1	1	1
Operating voltage compensation coefficient	1	0.93	0.88	0.82
Power frequency withstand voltage (kV)	6	6	6	5

Wiring Diagram





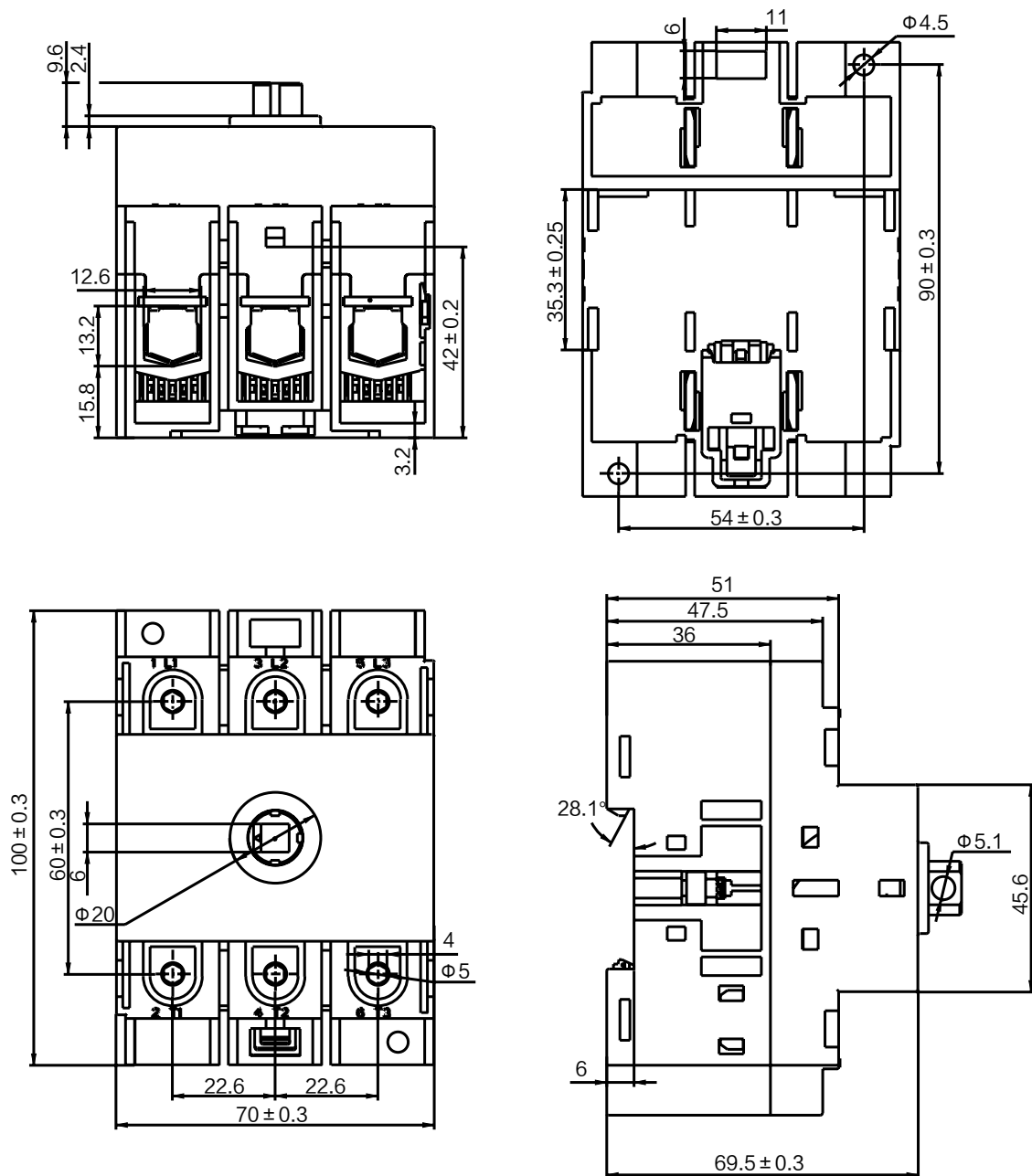
Non-Fusible Rotary Disconnect Switch

Dimensions

Board/DIN rail mounting

3P

Unit: mm





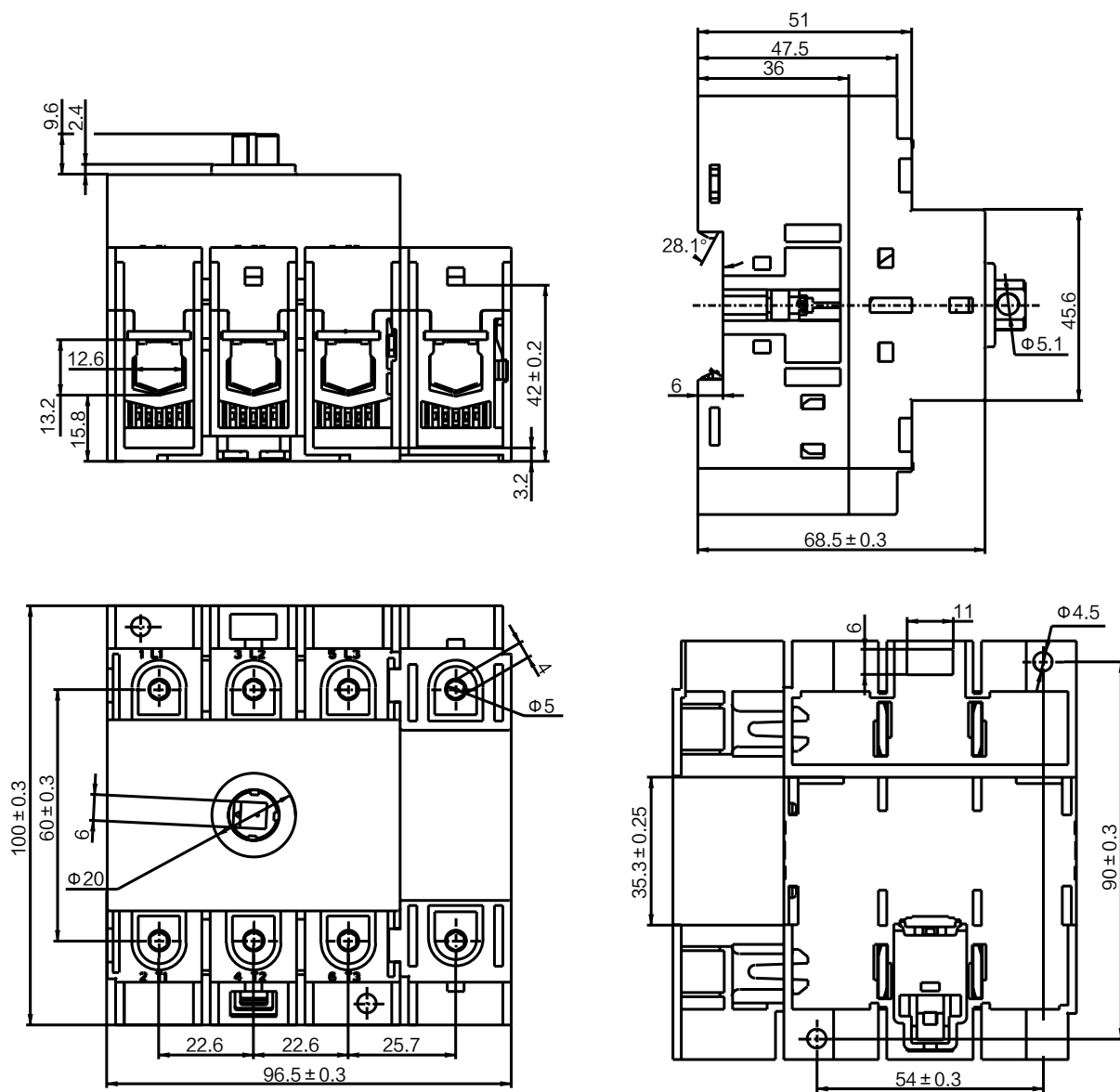
Non-Fusible Rotary Disconnect Switch

Dimensions

Board/DIN rail mounting

4P

Unit: mm





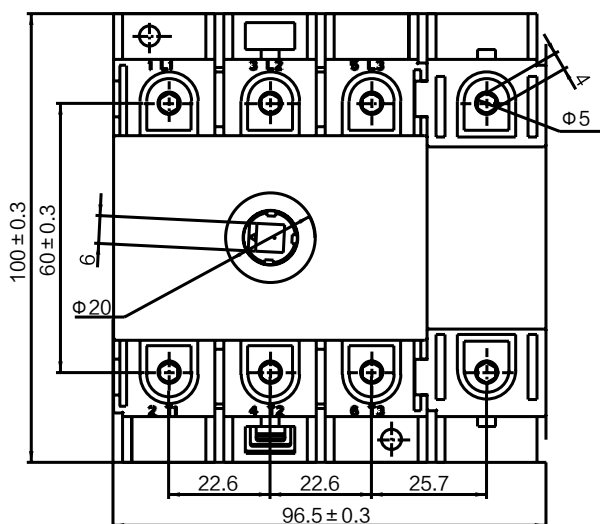
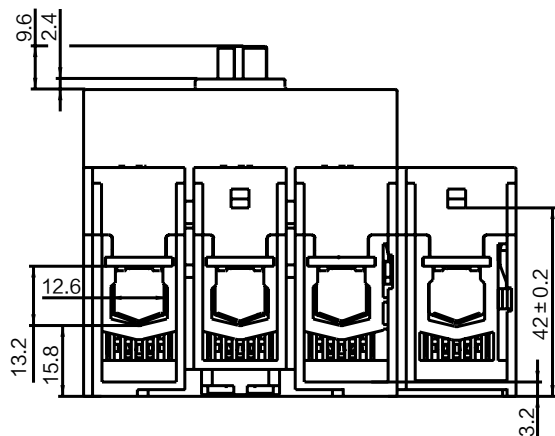
Non-Fusible Rotary Disconnect Switch

Dimensions

Door mounting

3P

Unit: mm





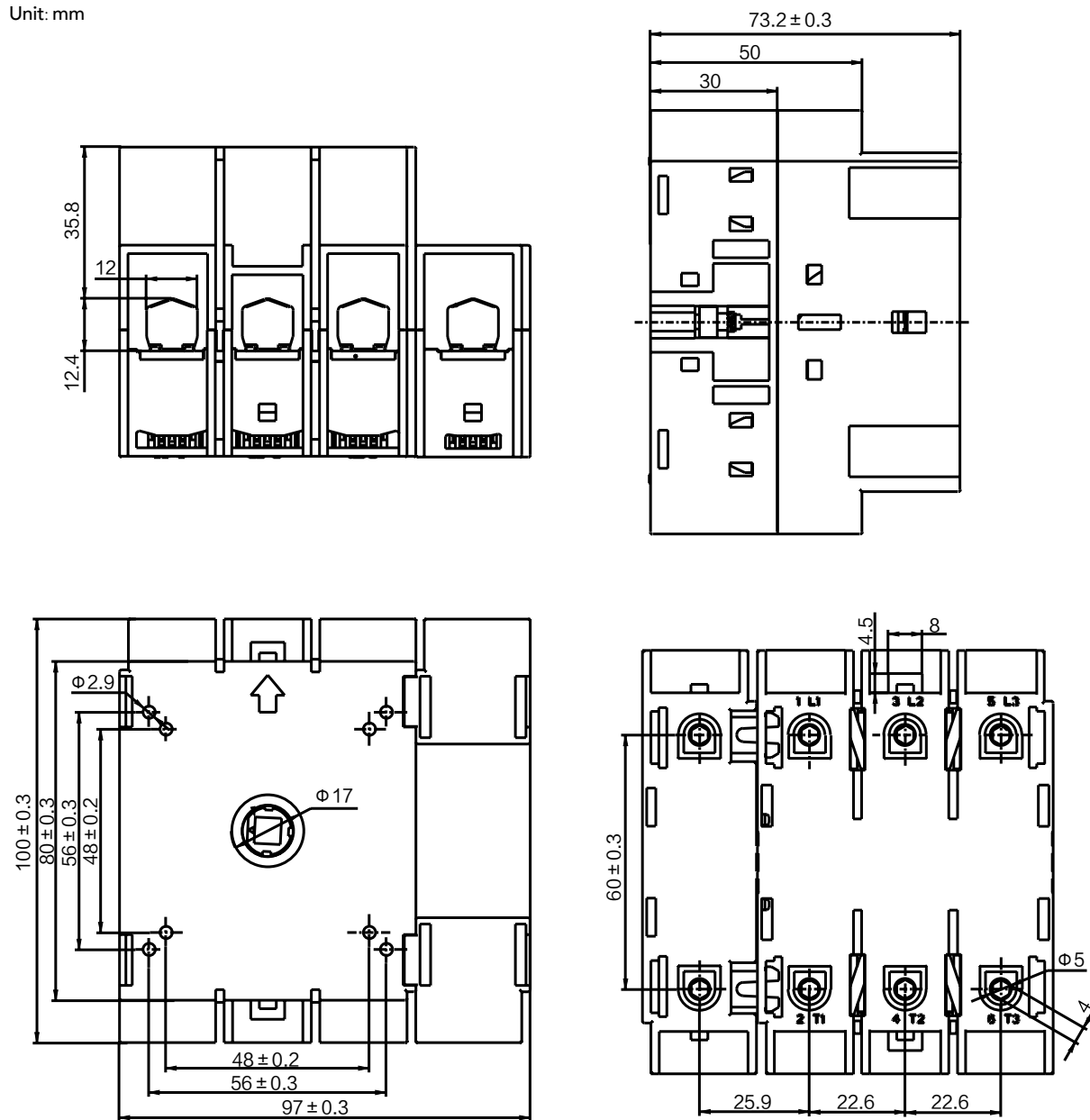
Non-Fusible Rotary Disconnect Switch

Dimensions

Door mounting

4P

Unit: mm





Accessory

Rotary handle, Extended shaft

Rotary Handle

NEH1	B	2
Description	Color	Standard
Rotary handle*	B: Black R: Red	2: NEMA



Extended Shaft

ES	20	E
Description	Length	Cross-sectional area
Extended shaft	20: 200mm 32: 320mm 40: 400mm	E: 6*6mm²



	Catalog number	Item Number	Description
Rotary handle	NEH1R2	1103300	Red
	NEH1B2	1103299	Black
Extended shaft	ES20E	1002999	200mm
	ES32E	1003000	320mm
	ES40E	1003001	400mm

*1. Rotary handles need to be ordered together with extended shafts.

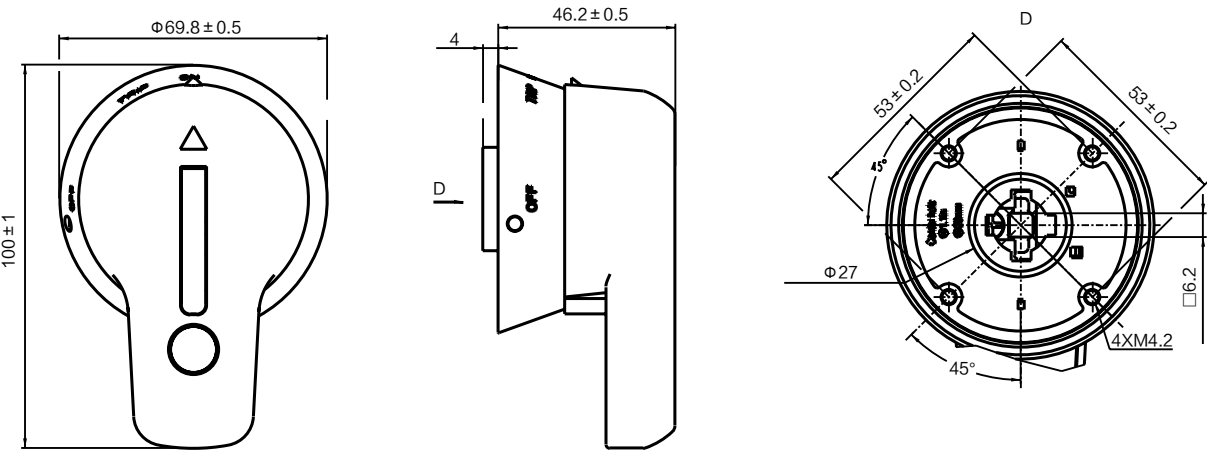


Accessory

Rotary handle, Extended shaft

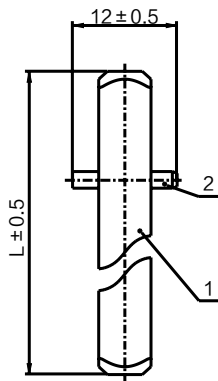
Rotary handle

Unit: mm



Extended shaft

Unit: mm



Product	L (mm)
ES20E	200
ES32E	320
ES40E	400

Auxiliary Contact



Auxiliary contact	When switch is off	When switch is on
Diagram	<p>AX12 (AX22)</p> <p>AX11 (AX21)</p> <p>AX14 (AX24)</p>	<p>AX12 (AX22)</p> <p>AX11 (AX21)</p> <p>AX14 (AX24)</p>

Unit: mm





Accessory

N pole

NT5	60	B	L
Description	Current specification	Switch mounting type	Mounting direction
N pole	60: 30~60A 125: 100~125A	B: Base/DIN rail mounting D: Door mounting	L: Mounting on the left side of 3-pole switch



NT5B

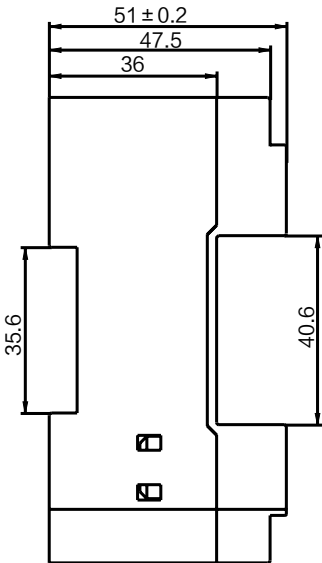
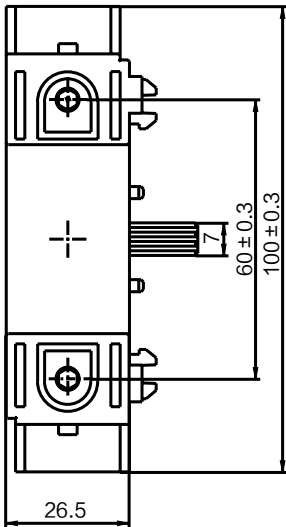
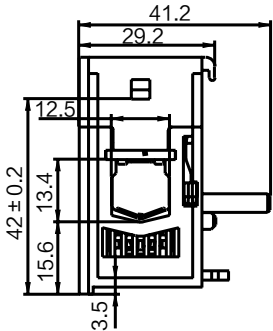


NT5D

	Catalog number	Item number	Description
N pole	NT560BL	1002995	Mounting on the left side of 30~60A 3-pole base/DIN rail-mounting switch
	NT5125BL	1003026	Mounting on the left side of 100~125A 3-pole base/DIN rail-mounting switch
	NT560DL	1002997	Mounting on the left side of 30~60A 3-pole door-mounting switch
	NT5125DL	1003028	Mounting on the left side of 100~125A 3-pole door-mounting switch

N pole

Unit: mm



NOARK



📍 NOARK Electric USA
2188 Pomona Blvd.
Pomona, CA 91768
☎ (626) 330-7007
✉ nasales@noark-electric.com



na.noark-electric.com

📍 NOARK Electric Canada
975 Bleams Rd. Unit 3
Kitchener, ON N2E 3Z5
☎ 519-790-0605
✉ casales@noark-electric.com



Note: NOARK Electric reserves the right to make technical changes or modify the contents of this document without prior notice. With regard to purchase orders, the agreed particulars shall prevail. NOARK Electric nor any of its affiliates or subsidiaries shall be responsible or liable for potential errors or possible lack of information in this document. NOARK Electric reserves all rights in this document and in the subject matter and illustrations contained therein. Any reproduction, disclosure to third parties or utilization of its contents – in whole or in parts – is forbidden without prior written consent of NOARK Electric.